



FUNCTIONAL SKILLS MATHS & ENGLISH

LEVEL 1 & 2 EXAMS

WHO WE ARE

Leading training company for 26 years

Intech Centre is an established training provider based in Islington, London, with over 26 years of experience in delivering education, employability and digital skills programmes.

Intech Centre specialises in **Functional Skills English and Maths Level 1 & 2**, helping learners successfully pass Level 1 and Level 2 Functional Skills exams required for university entry, apprenticeships, teacher training, nursing courses and many other professional pathways.

Thousands of learners have used our resources, courses and exam services to achieve nationally recognised qualifications.

[BOOK NOW](#)[LEARN MORE](#)

** The materials in this document are the intellectual property of the relevant awarding organisation and are shared for educational and revision purposes only. Intech Centre does not claim ownership of these materials and all rights remain with the respective awarding body.*

SERVICES

Courses

- Functional Skills Maths
- Functional Skills English

Tutoring

- Functional Skills Maths & English Exam Tutoring

EXAMS

- ➔ Functional Skills **Maths** Level 1 or 2 Exam **in London**
- ➔ Functional Skills **English** Level 1 or 2 Exam **in London**
- ➔ **Online** Functional Skills **Maths** Level 1 or 2 Exam
- ➔ **Online** Functional Skills **English** Level 1 or 2 Exam



www.intechcentre.com



362 Essex Road
Islington N1 3PD



020 7354 5655

BOOK YOUR FUNCTIONAL SKILLS EXAM NOW!



Please write clearly in block capitals.

Centre number

--	--	--	--	--

Candidate number

--	--	--	--

Surname

Forename(s)

Candidate signature

I declare this is my own work.

Functional Skills Level 2

ENGLISH

Paper 2 Writing

Friday 4 November 2022

Afternoon

Time allowed: 1 hour

Materials

- You will need no other materials.
- You **must not** have access to a dictionary or any other spelling or grammar aid.

Instructions

- Use black ink or black ball-point pen.
- Fill in the boxes at the top of this page.
- Answer **both** questions.
- You must answer the questions in the spaces provided.
- Do not write outside the box around each page or on blank pages.
- If you need extra space for your answer(s), use the lined pages at the end of this book.
Write the question number against your answer(s).
- Do all rough work in this answer book.
- Cross through any work you do not want to be marked.

Information

- The marks for questions are shown in brackets.
- The maximum mark for this paper is 30.
- You are reminded of the need for good English and clear presentation in your answers.

Advice

You are advised to spend 20 minutes on **Question 1** and 40 minutes on **Question 2**.

For Examiner's Use	
Question	Mark
1	
2	
TOTAL	



N 0 V 2 2 8 7 2 5 W 0 1

IB/G/Nov22/E2

8725W
QAN 603/4285/7

Answer **both** questions.

Answer the questions in the spaces provided.

0 1

You have received the following flyer through your letterbox.

Community Transport Research Group
comtrgroup.co.uk

We're a government-funded group looking at young people's use of public transport. We're trying to get as much information as possible about the real experiences of real young people.

So, provide us with a brief report about one bad experience and one good experience. It's as simple as that.

We'll send you some free travel vouchers when you email your report to us at email@comtrgroup.co.uk.



You want to email your report to comtrgroup.co.uk.

Write a brief report about **one** bad and **one** good experience with public transport. Your report should be approximately **150 to 200** words in total.

Remember to:

- plan your answer
- use correct spelling, punctuation and grammar
- write clearly and effectively.

[6 marks]
[+ 3 marks for SPaG]

Plan your answer here:



Do not write
outside the
box

A large rectangular box containing 25 horizontal lines for writing. The box has a double-line border and a vertical scrollbar on the right side.



Turn over for the next question

*Do not write
outside the
box*

**DO NOT WRITE ON THIS PAGE
ANSWER IN THE SPACES PROVIDED**



0 5

Turn over ►

0 2

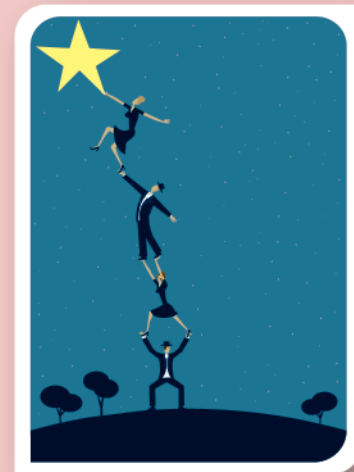
You have found the following on a news website:

Facing A Challenge

We're looking for articles that will tell us something about facing challenges in our lives. Now this can be anything, from the brutal challenge of waking up in the morning to the challenge of addressing climate change. There are sporting challenges, challenges to our beliefs, challenges in our cities...

Write an interesting article on how you faced a challenge, whether alone or with others. If your article is published, you could win a 3-day trip to a city of your choice.

Submit your article online at: challengeitUK.com



Write an article about facing a challenge for the challengeitUK competition.

Remember to:

- plan your answer
- use correct spelling, punctuation and grammar
- write accurately in sentences and paragraphs.

[12 marks]
[+ 9 marks for SPaG]

Plan your answer here:



There are no questions printed on this page

*Do not write
outside the
box*

**DO NOT WRITE ON THIS PAGE
ANSWER IN THE SPACES PROVIDED**





Book Your Functional Skills Exam Now!

Intech Centre is a leading training, careers and examination centre based in Islington, London, delivering Functional Skills Maths and English courses and exams for over 26 years.



Book Now!



Book Your Exams & Courses

Qualification	Private Course	Online Exam	Exam in London
Functional Skills Maths Level 1 & 2	Enrol on Course	Book Online Exam	Book London Exam
Functional Skills English Level 1 & 2	Enrol on Course	Book Online Exam	Book London Exam

Why Intech Centre?

- Over **26 years' experience** as a UK training and exam centre in London.
- **City & Guilds Functional Skills Maths and English exams**, Ofqual regulated and nationally recognised.
- Flexible **online learning** with 24/7 access plus online or centre-based exam options.
- Ideal if you still need GCSE Maths or English equivalent for university entry, teacher training, apprenticeships or employment.

CALL US FOR MORE INFORMATION:



020 7354 5655



www.intechcentre.com



info@intechcentre.com