



# FUNCTIONAL SKILLS MATHS & ENGLISH

## LEVEL 1 & 2 EXAMS

### WHO WE ARE

## Leading training company for 26 years

Intech Centre is an established training provider based in Islington, London, with over 26 years of experience in delivering education, employability and digital skills programmes.

Intech Centre specialises in **Functional Skills English and Maths Level 1 & 2**, helping learners successfully pass Level 1 and Level 2 Functional Skills exams required for university entry, apprenticeships, teacher training, nursing courses and many other professional pathways.

Thousands of learners have used our resources, courses and exam services to achieve nationally recognised qualifications.

[BOOK NOW](#)[LEARN MORE](#)

*\* The materials in this document are the intellectual property of the relevant awarding organisation and are shared for educational and revision purposes only. Intech Centre does not claim ownership of these materials and all rights remain with the respective awarding body.*

### SERVICES

## Courses

- Functional Skills Maths
- Functional Skills English

## Tutoring

- Functional Skills Maths & English Exam Tutoring

## EXAMS

- ➔ Functional Skills **Maths** Level 1 or 2 Exam **in London**
- ➔ Functional Skills **English** Level 1 or 2 Exam **in London**
- ➔ **Online** Functional Skills **Maths** Level 1 or 2 Exam
- ➔ **Online** Functional Skills **English** Level 1 or 2 Exam



[www.intechcentre.com](http://www.intechcentre.com)



362 Essex Road  
Islington N1 3PD



020 7354 5655

**BOOK YOUR FUNCTIONAL SKILLS EXAM NOW!**



## NCFE Level 2 Functional Skills Qualification in Mathematics (603/5060/X)

Paper number:	P001259
Section B:	Calculator Test



**Assessment window:** Monday 9 December 2019 – Friday 13 December 2019  
**Time allowed:** 1 hour 30 minutes

### Learner instructions

- Answer **all** questions.
- Read each question carefully.
- Write your answers in the spaces provided.
- Show your working, as marks may be awarded for working.
- State units in your answers, where appropriate.
- Check your work.
- Use  $\pi = 3.14$

### Learner information

- Section B contains **Activities 2, 3 and 4**.
- The maximum mark for this section is **45**.
- The marks available for **each** question are shown in brackets.

### Resources

You will need a:

- pen, with black or blue ink
- pencil and eraser
- 30 cm ruler
- protractor
- calculator.

If extra pages are used, please make sure your name and centre name are on them and they are securely fastened to this booklet.

**Please complete the details below clearly and in BLOCK CAPITALS.**

Learner name \_\_\_\_\_

Centre name \_\_\_\_\_

Learner number

Centre number

**Do not turn over until the invigilator tells you to do so.**

**Activity 2: Running a business**

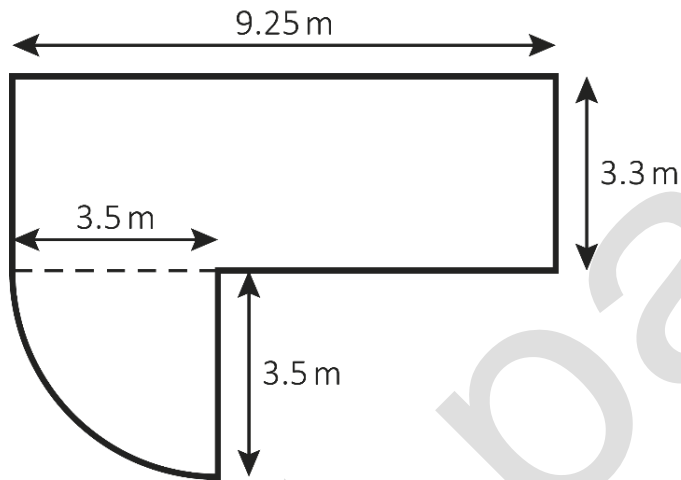
**2 (a)** Dan has set up a patio cleaning business.

He charges £4.25 per  $\text{m}^2$  of the patio to be cleaned.



Mrs Jones has asked Dan how much he will charge for cleaning her patio.

This diagram shows her patio:



**Not drawn  
accurately**

How much will Dan charge Mrs Jones for cleaning her patio?

Use  $\pi = 3.14$

[4 marks]

bast paper

Your answer:

£

Please turn over

**2 (b)** Mr Patel pays Dan £250 to clean his patio.

The £250 includes VAT at 20%

How much was the bill before the VAT was added?

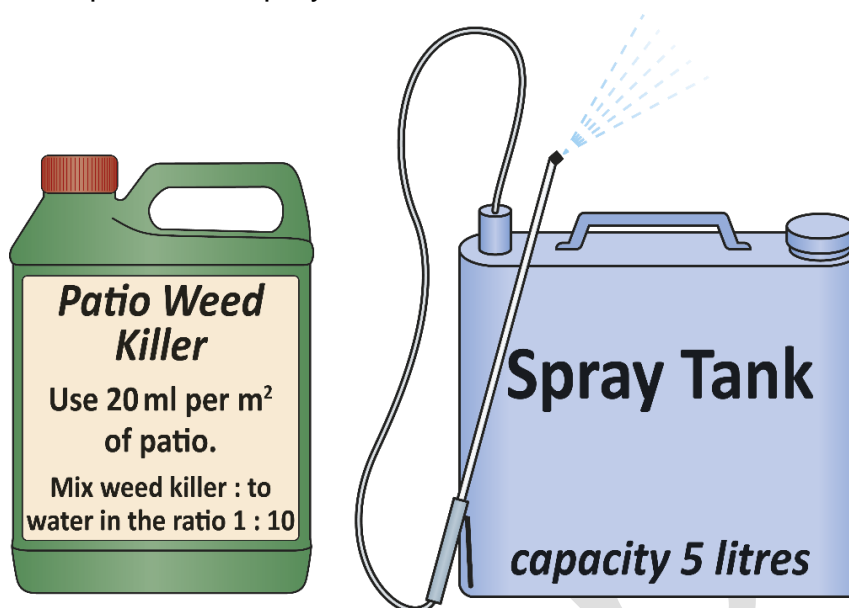
**[2 marks]**

Your answer:

£

2 (c) Dan needs to make a mixture of weed killer and water to clean Mr Patel's patio.

The area of the patio to be sprayed is  $63.2 \text{ m}^2$



He fills the spray tank with the weed killer and water mixture.

How many times does Dan need to fill the spray tank to cover the whole patio?

[3 marks]

Answer area for the question.

Your answer:

Blank box for the answer.

Please turn over

**2 (d)** Dan wants to expand his business.

Next year he plans to clean patios from 8.30am to 3.30pm, Monday to Friday for 26 weeks during the spring and summer.

This table shows how long each job took Dan **this year**.  
The times include travel time.

Time per cleaning job	Number of jobs
$30 < \text{time} \leq 60$ minutes	25
$60 < \text{time} \leq 90$ minutes	36
$90 < \text{time} \leq 120$ minutes	45
$120 < \text{time} \leq 150$ minutes	21
<b>Total</b>	127

Use the data to estimate how many patios Dan can clean **next year** if he works the hours planned.

[5 marks]

Answer area for the question.

Your answer:

patios

- 2 (e) This table shows how long each job took Dan **last year**.

Time per cleaning job	Number of jobs
$30 < \text{time} \leq 60$ minutes	14
$60 < \text{time} \leq 90$ minutes	22
$90 < \text{time} \leq 120$ minutes	30
$120 < \text{time} \leq 150$ minutes	16
<b>Total</b>	82

Dan's accounts are checked by the tax office.

They pick one of **last year's** jobs at random to check.

What is the probability that the job would have taken more than 90 minutes?

[1 mark]

Your answer:	

[Total marks: 15]

Please turn over

past paper

**This page is intentionally left blank.**

**Activity 3: Cycling**

**3 (a)** There are 51 million adults in the UK.

20.5 million do **not** do any regular exercise.

What fraction of adults in the UK do **not** do any regular exercise?

[1 mark]

--

Your answer:

--

**3 (b)** The proportion of commuters who cycle to work in the UK is 0.06

Write 0.06 as:

- a fraction
- a percentage.

[2 marks]

--

Your answer:

**Fraction:**

--

**Percentage:**

--

Please turn over

**3 (c)** Jackie is training for a cycle race.  
She reads a cycling blog.

It says that cyclists should aim to keep their heart rate above 72% of their maximum heart rate.

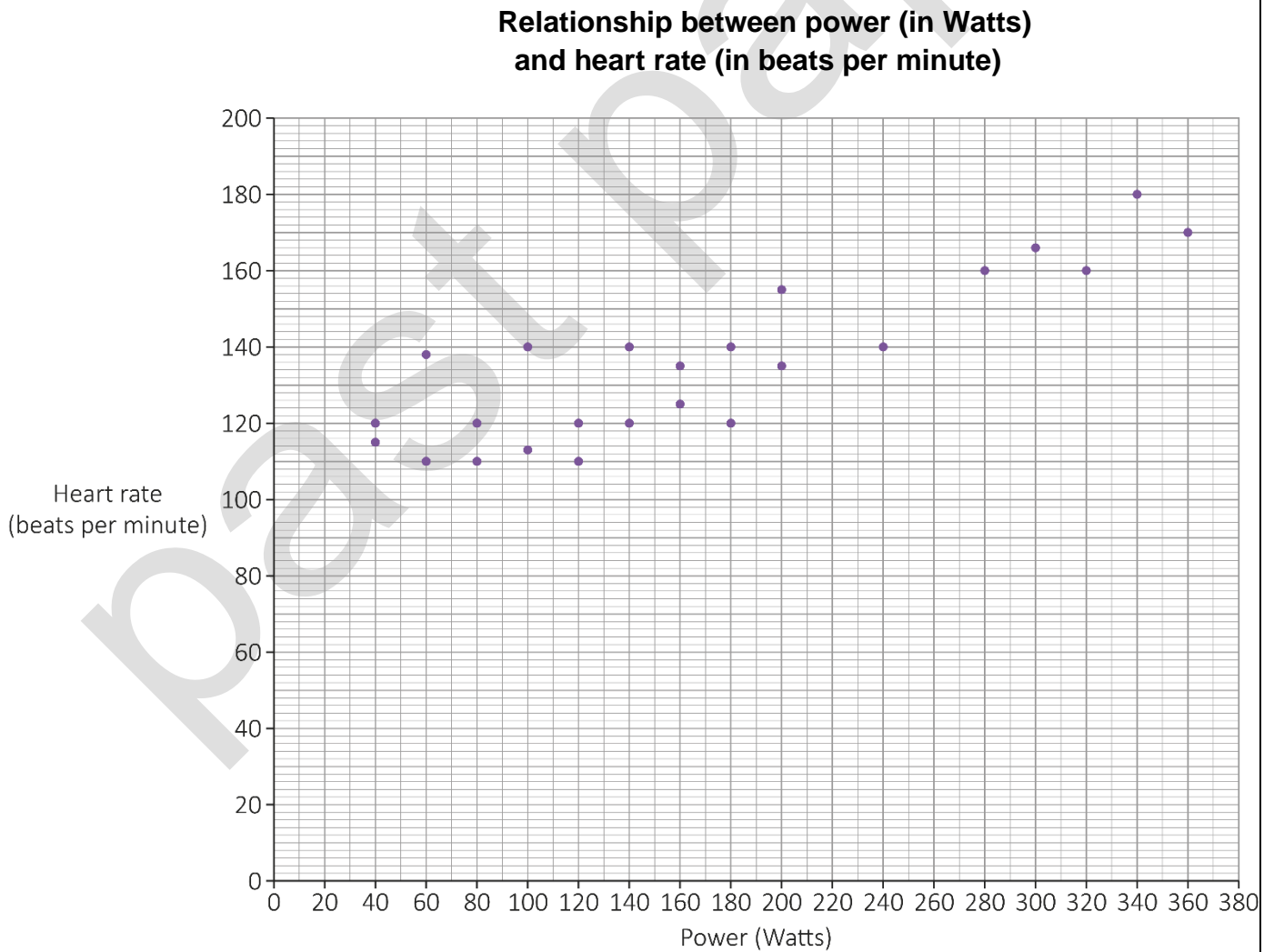
Jackie uses this formula to work out her maximum heart rate:

$$M = 191.5 - 0.007A^2$$

Where: M is the maximum heart rate in beats per minute  
A is age in years.

Jackie is 25 years old.

This scatter diagram shows the relationship between power (in Watts) and heart rate (beats per minute):



To produce 100 Watts of power, a cyclist uses about 350 kilocalories per hour.

Estimate the number of kilocalories Jackie uses per hour if she cycles at 72% of her maximum heart rate.

**[6 marks]**

past paper

Your answer:

**kilocalories**

**Please turn over**

**3 (d)** Rafa and his friends cycle to keep fit.

They want to reduce the mean time it takes them to cycle 10 km

Their target is to reduce the time by 11% within 12 weeks.

This table shows their times in **Week 1** and **Week 12**.

	Time (minutes) to cycle 10 km	
	Week 1	Week 12
<b>Ann</b>	26.3	23.9
<b>Mike</b>	22.0	20.2
<b>Rafa</b>	28.1	25.7
<b>Ali</b>	24.9	20.4
<b>Maria</b>	18.4	18.1
<b>Luke</b>	21.7	20.7
<b>Becky</b>	20.3	17.3

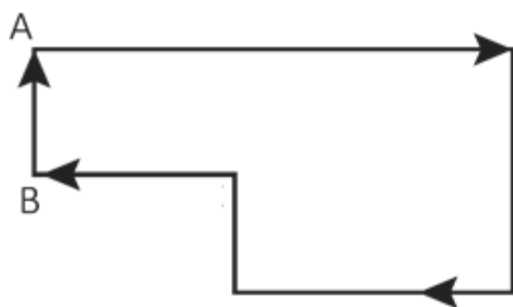
Has the group achieved its target?

Show how you decide.

**[4 marks]**

Your answer:

**3 (e)** Peta cycles around this route:



Not drawn  
accurately

She starts at A.

When she reaches B she has cycled 12.5 miles.

**(i)** What is 12.5 miles in km?

Use this conversion:  $1.6 \text{ km} = 1 \text{ mile}$

[1 mark]

--	--

Your answer:

The total route is 23 km

**(ii)** What fraction of the total route has she cycled when she reaches B?

[1 mark]

--	--

Your answer:

[Total marks: 15]

Please turn over

**Activity 4: Packaging**

- 4 (a)** Beth is on a work placement.  
The company makes biscuits.

In 2018 it reduced the number of biscuits in each packet.

The weight of each biscuit stayed the same.

The weight of a packet went from 135 g to 108 g

The 135 g packet contained 25 biscuits.

How many fewer biscuits did the 108 g packet contain?

**[2 marks]**

--

Your answer:

**biscuits**

4 (b) The company also makes pizza.

This table shows information about the two sizes it sells:

Pizza	Diameter	Depth
Large	38 cm	2 cm
Small	19 cm	1.5 cm

Beth says that the large size gives over 5 times as much pizza as the small size.

Is Beth correct?

Show how you decide.

Use  $\pi = 3.14$

[4 marks]

past paper

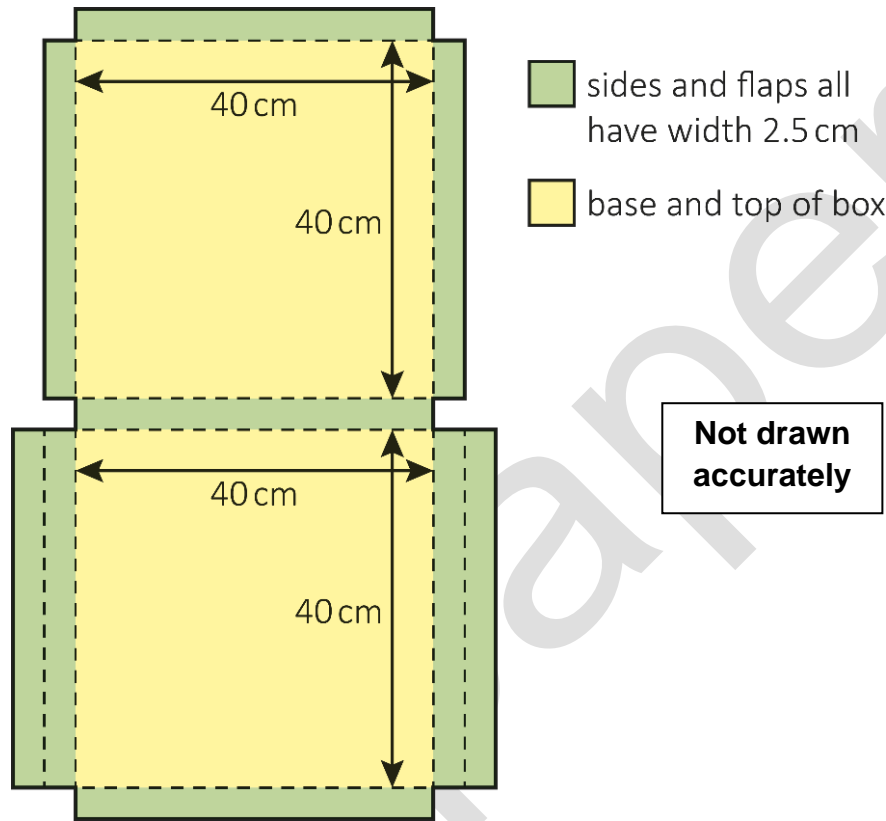
Your answer:

Please turn over

**4 (c)** The large pizzas are sold in cardboard boxes.

When closed, the boxes measure 40 cm by 40 cm by 2.5 cm and are cuboid.

This is the net of the pizza box:



The company thinks it could use the same net but reduce the dimensions to 38 cm by 38 cm by 2 cm

Beth is asked to calculate the percentage reduction in cardboard if the smaller boxes are used.

What answer should Beth get?

**[5 marks]**

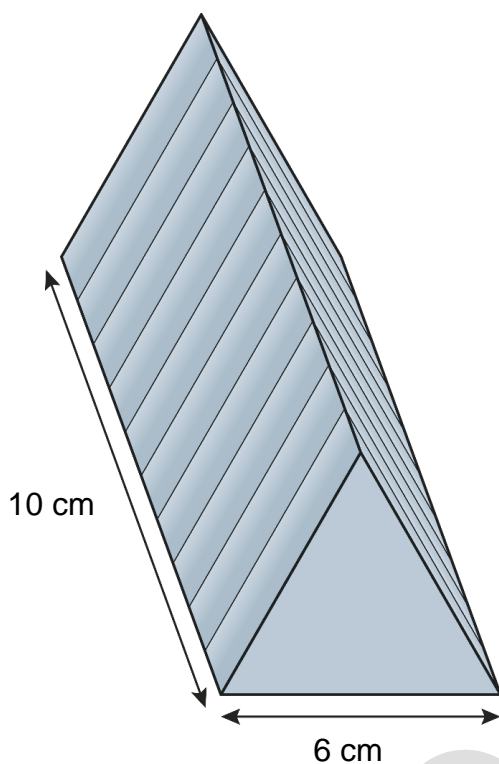
past paper

Your answer:

%

**Please turn over**

- 4 (d)** The company also makes a chocolate bar.  
 It is divided into 10 identical triangle-shaped pieces.



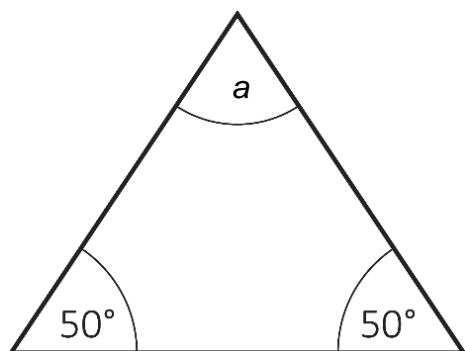
**Not drawn accurately**

Draw a plan view of the bar in the space below.

Label the dimensions.

**[3 marks]**

- 4 (e) One triangular face of the chocolate bar is shown in the diagram.



Not drawn  
accurately

Calculate the size of the angle labelled  $a$

[1 mark]

Your answer:	°

[Total marks: 15]

This is the end of the assessment.

bast paper

**This page is intentionally left blank.**



# Book Your Functional Skills Exam Now!

Intech Centre is a leading training, careers and examination centre based in Islington, London, delivering Functional Skills Maths and English courses and exams for over 26 years.



**Book Now!**



## Book Your Exams & Courses

Qualification	Private Course	Online Exam	Exam in London
Functional Skills Maths Level 1 & 2	<a href="#">Enrol on Course</a>	<a href="#">Book Online Exam</a>	<a href="#">Book London Exam</a>
Functional Skills English Level 1 & 2	<a href="#">Enrol on Course</a>	<a href="#">Book Online Exam</a>	<a href="#">Book London Exam</a>

## Why Intech Centre?

- Over **26 years' experience** as a UK training and exam centre in London.
- **City & Guilds Functional Skills Maths** and **English exams**, Ofqual regulated and nationally recognised.
- Flexible **online learning** with 24/7 access plus online or centre-based exam options.
- Ideal if you still need GCSE Maths or English equivalent for university entry, teacher training, apprenticeships or employment.

CALL US FOR MORE INFORMATION:



**020 7354 5655**



[www.intechcentre.com](http://www.intechcentre.com)



[info@intechcentre.com](mailto:info@intechcentre.com)